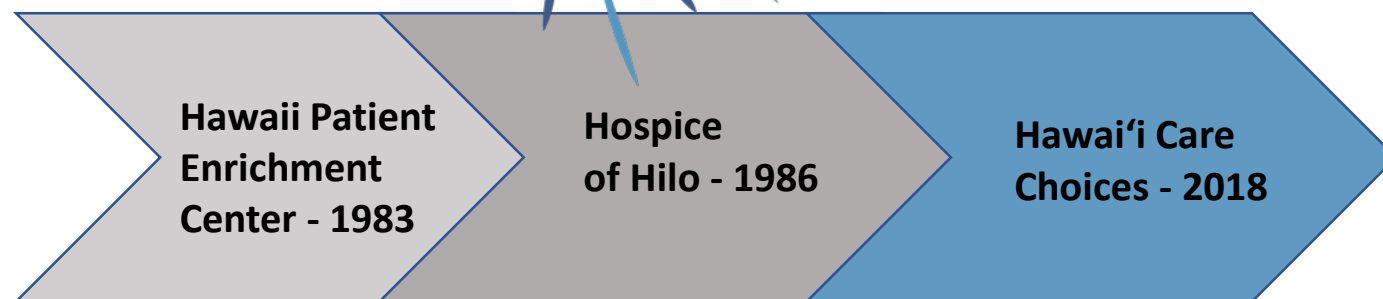


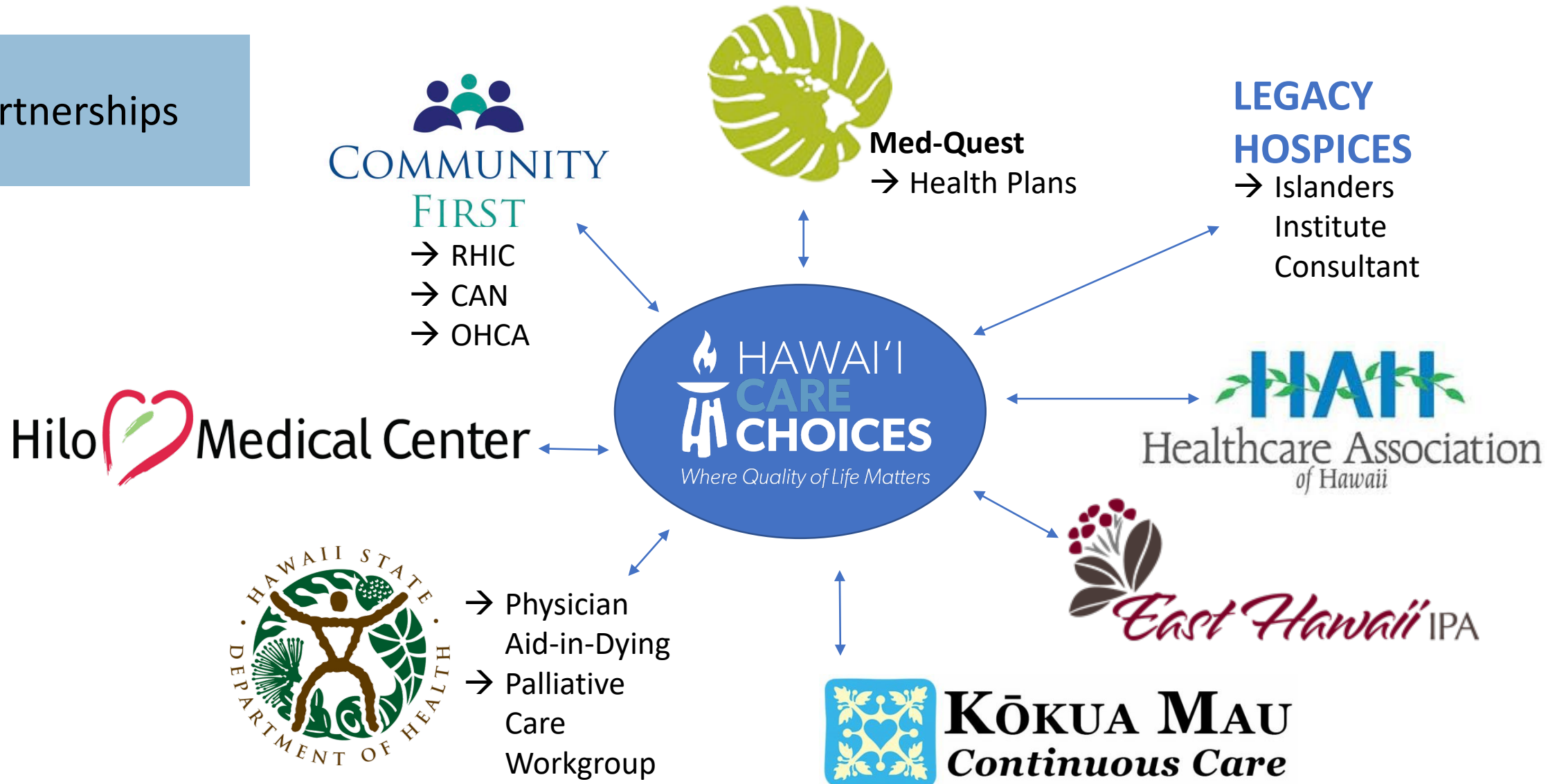
# WELCOME



## To Improve the Lives of those we touch

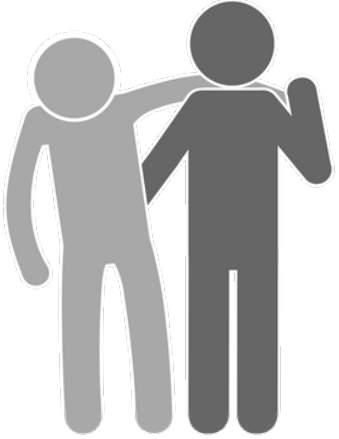
By offering support,  
guidance and compassionate  
care of body, mind and spirit.

## Partnerships



# Palliative CARE

Support that focuses on relieving pain and discomfort from serious illness and treatments.



## KUPU CARE

Community-Based  
Palliative Care  
Program



Providing palliative  
symptom management  
& care coordination

**4** Years of  
Service

**248**  
Patients Served  
(263 Total Admissions)

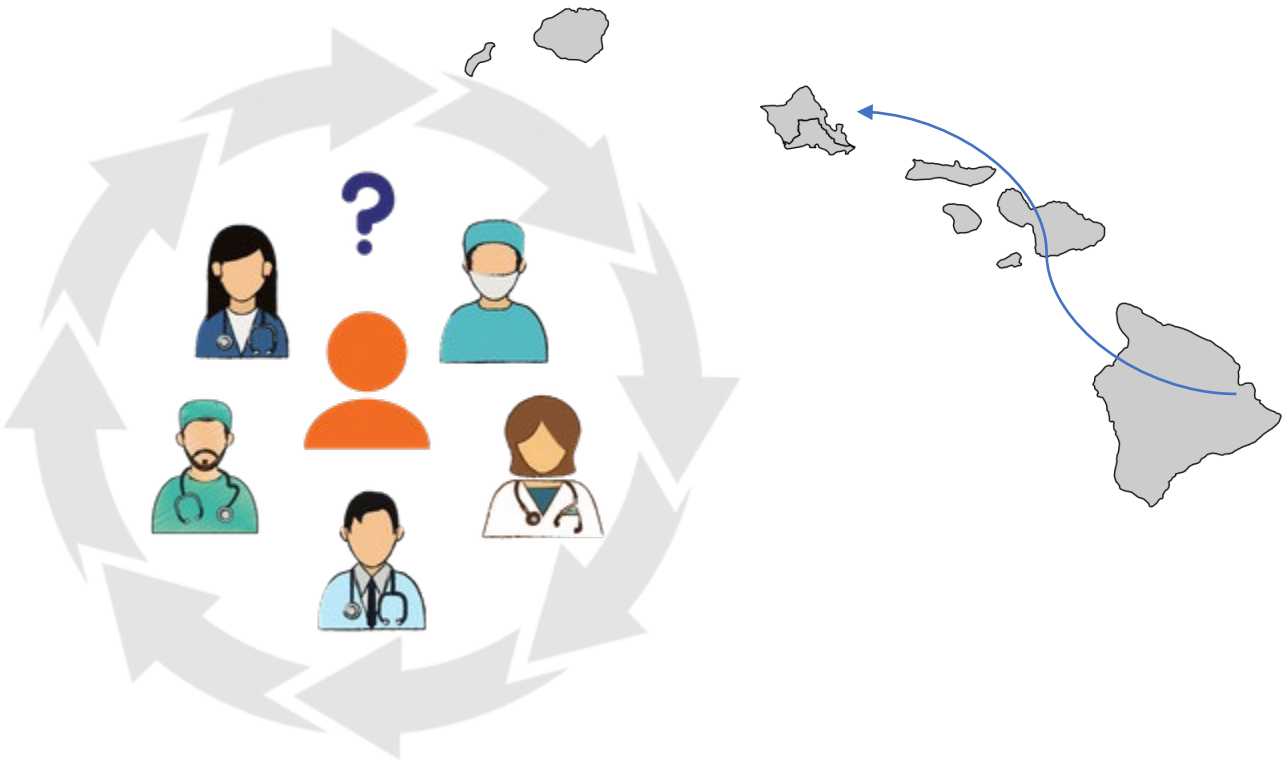
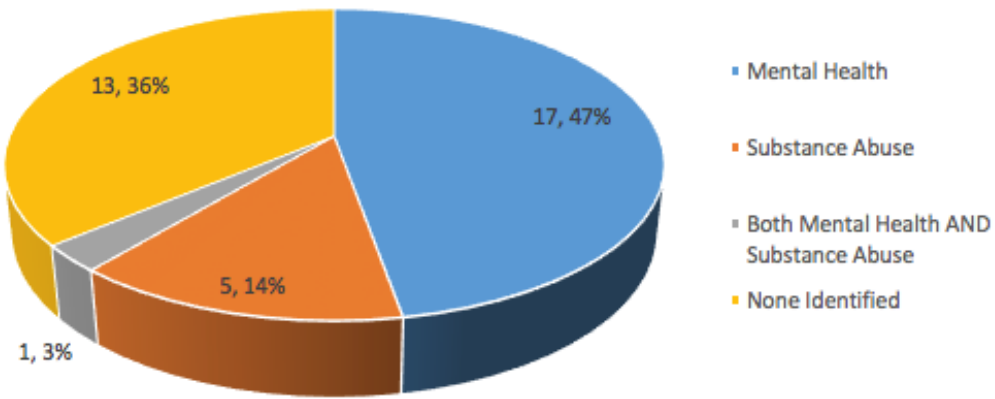
**0** NO  
CHARGE  
to patients

# Complex Patients – Care Challenges

CMS Top Terminal CCS Categories	Values	
	Count	%
Cancer	150	57%
Circulatory or Heart Disease	75	29%
Respiratory disease	25	10%
Other	13	5%
<b>Grand Total*</b>	<b>263</b>	<b>100%</b>

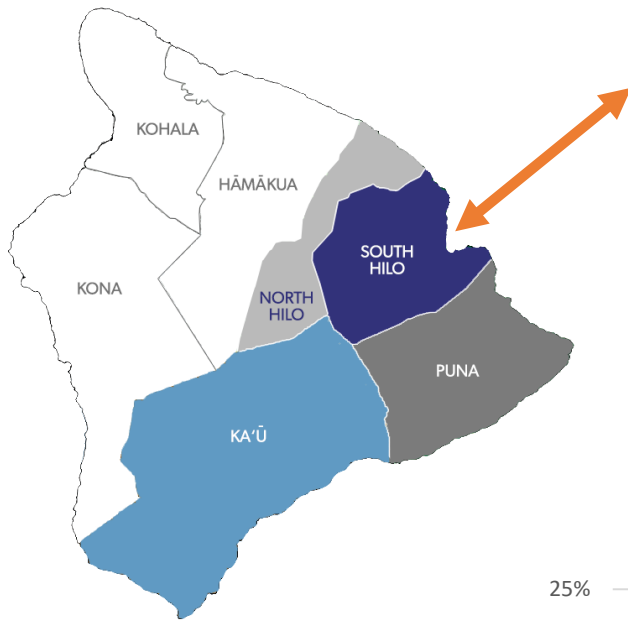
*\* Based on total number of admissions*

Kupu Care Medicaid Patients Served with Mental Health and/or Substance Abuse Issues Identified



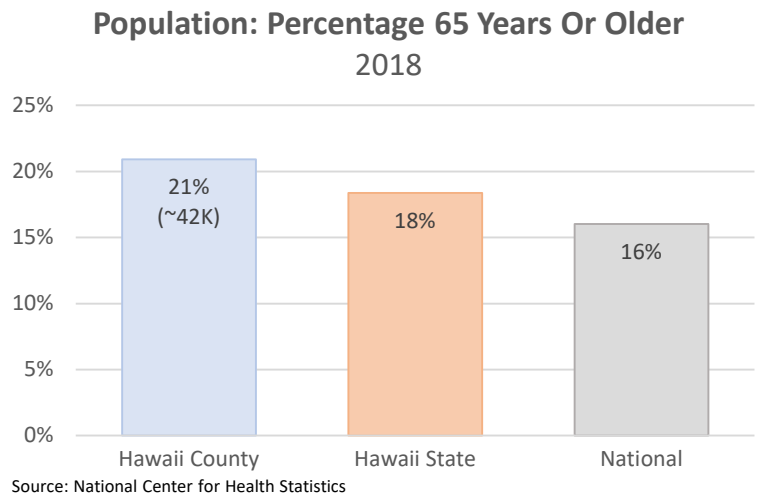
1. Complex patients with **many intersected needs**.
2. Many **unable to manage** self-care.
3. Primary Diagnoses accompanied by **co-morbidities**.
4. Complications with **Mental Health and/or substance abuse**.
5. Many patients **juggle 5 – 6 physicians**; some fly to O’ahu.

# Care Challenges Require Care Coordination



East Hawai'i = **disproportionate healthcare and socio-economic complexities** as indicated in this report:  
[http://www.hawaiihealthmatters.org/content/sites/hawaii/2015\\_Hawaii-County-CHNA.pdf](http://www.hawaiihealthmatters.org/content/sites/hawaii/2015_Hawaii-County-CHNA.pdf)

**And HIGHER % of seniors than state or national ave.**



## Kupu Care's Interdisciplinary Team



Coordinated Care =  
Cost Savings

The fragmented approach to care in East Hawai‘i does not allow for collection of data on cost savings, but **national findings show care coordination of most complex patients lead to significant savings.**

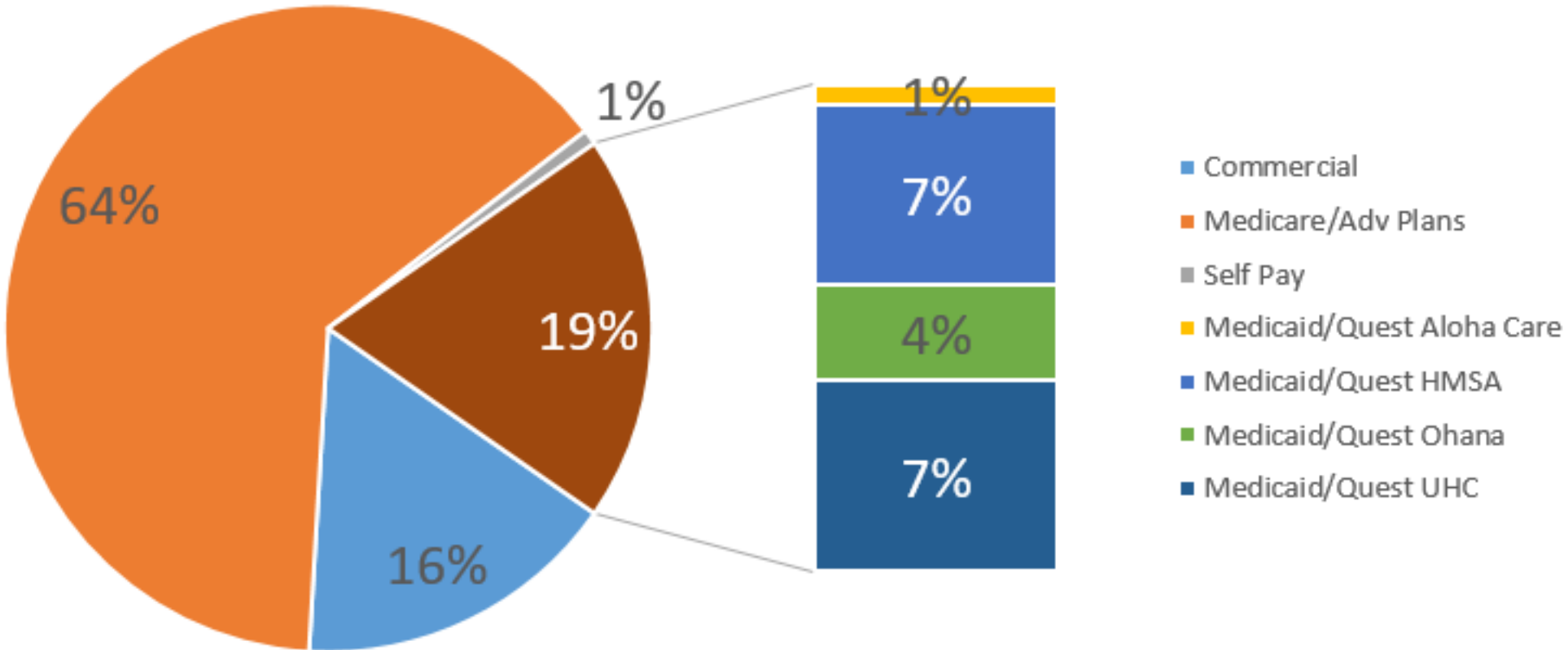
Most Fragmented Practices	Most Coordinated Practices
<ul style="list-style-type: none"><li>• 32.8% of patients received care departing from clinical best practices</li><li>• 9.1% rate of preventable hospitalizations</li><li>• \$10,396 average patient cost</li></ul>	<ul style="list-style-type: none"><li>• 25.9% received sub-optimal care departing from clinical best practices</li><li>• 7.1% rate of preventable hospitalizations</li><li>• \$5,854 average patient cost</li></ul>

\*According to a 2016 study conducted by the *American Journal of Managed Care*

An  
average  
savings of  
\$4,542 per  
patient.

Current Kupu Care  
Payor model

Kupu Care Admissions by Payor  
(through March 2020)







*Mahalo*

Palliative  | Hospice  | Bereavement 